



The Disappearing West: Washington

by the CAP Public Lands Team May 2016

Project overview

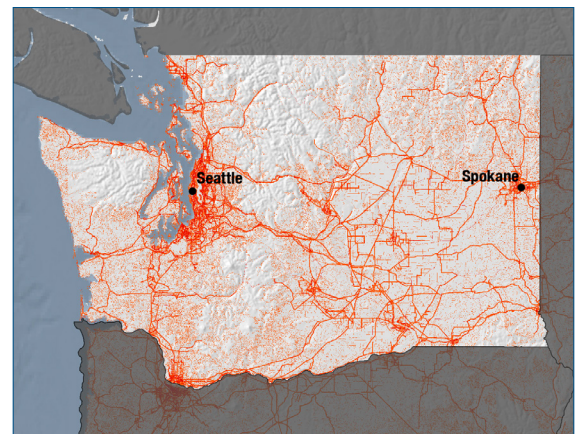
The Disappearing West project measures and maps the level of human development in the American West and seeks to answer a vital question: How fast are the region's natural areas disappearing because of development? A team of scientists at the nonprofit Conservation Science Partners, or CSP—working in partnership with the Center for American Progress—reached the following standout conclusions:

- Human development in the West—including roads, commercial and residential development, energy infrastructure, and agricultural and timber operations—now covers more than 165,000 square miles of land.
- Between 2001 to 2011 in the West, a football field worth of natural area disappeared every 2.5 minutes. That adds up to a Los Angeles-sized area of open land disappearing every year.
- A bear walking a random path through natural areas in the West is an average of only 3.5 miles from significant human development. In just 10 years, that buffer between natural and developed areas shrunk by nearly one-third of a mile.

Washington results

CSP analyzed four categories of human activities, or stressors, that cause the loss of natural areas: agriculture and timber; energy development; urban sprawl; and transportation and infrastructure.

The combined footprint of these human activities occupies approximately 14,000 square miles of land in Washington.



Roads, transmission lines, and other transportation

Natural area loss in Washington, by stressor

Stressor	Total area modified by stressor, in square miles		Natural area lost to stressor, in square miles	Percent change in area modified by stressor
	2001	2011	2001–2011	2001–2011
Urban Sprawl	1,815	2,092	277	15.2%
Transportation	1,563	1,615	52	3.3%
Agriculture/Timber	9,230	9,263	33	0.4%
Energy	17	47	30	176.5%

Washington lost 456 square miles of natural area to development between 2001 and 2011. That's equal to 220,939 football fields of open, natural areas.

The leading cause of this loss was urban sprawl, whose footprint grew by 15.2 percent between 2001 and 2011, followed by transportation and infrastructure, whose footprint grew by 3.3 percent in this period.

Agricultural and timber activities cover approximately 9,000 square miles, the largest amount of land used for any type of development in Washington.

The three counties in Washington that lost the greatest amount of land based on the percent change in development from 2001-2011 were Island, Kitsap, and Clark counties.

Of the western states in the continental United States, Washington experienced the 4th fastest rate of development based on the percent change in development from 2001-2011.

What can be done?

Only 12 percent of lands in Washington are permanently protected from development.

By incentivizing the conservation of private lands, establishing plans for smart growth, and protecting large, contiguous areas of public lands, decisionmakers can better safeguard Washington's wildlife, natural beauty, and economy for future generations.

To explore the data, the interactive map, and the full project, visit DisappearingWest.org.